

Operating manual

EDER Attachments

Chainsaw accessories for processing tree trunks and wood

EN



Content

About this guide	3
Validity.....	3
Ensure.....	3
Presentation of warnings	4
Symbols in this guide.....	5
Safety.....	6
Intenite use	6
Unintended use.....	6
Staff qualification	7
You have to pay attention to that.....	7
Safety advice on the workplace	7
Behaviour in an emergency	8
Safety.....	8
Personal protective equipment	8
Structure and function	8
Function.....	8
EDER Peeler ESG.....	9
EDER Planhobel EPH.....	9
EDER Roundo ERH	9
EDER contour hobble EKH.....	10
EDER Troghöhler ETH	10
EDER disc milling ESF	11
EDER round brush ERB	12
EDER bark beetle miller EBF	12

Delivery	13
Check the scope of delivery for completeness	13
Check transport damage	13
Transport.....	14
Assembly	14
Preparations on the chainsaw.....	15
Installation of the attachment	16
Commissioning and operation	18
Start the engine.....	18
Operation	19
Change and adjust knives.....	20
EDER Peeler ESG.....	20
EDER Planhobel EPH / EDER Round Bull ERH	21
EDER contour hobble EKH.....	22
EDER Troghöhler ETH	23
EDER disc cutter ESF.....	25
EDER round brush ERB	25
EDER bark beetle miller EBF.....	26
Cleaning.....	28
Maintenance	28
Decommissioning and disposal	29
Disorders	29
Technical data	31
Accessories and spare parts.....	31
Strip knife to dampen the bark beetle	31

EDER Peeler ESG.....	32
EDER Planhobel EPH.....	33
EDER Roundo ERH	34
EDER contour hobble EKH.....	35
EDER Troghöhler ETH	36
EDER disc milling ESF.....	38
EDER round brushes ERB.....	39
Declaration	42

About this guide

Validity

This manual applies to attachments (accessories) for mounting on chainsaws for debarking and milling tree trunks and wood in the following variants:

EDER Bark Stripper ESG

EDER Flat Planer EPH

EDER Curved Planer ERH

EDER Contour Planer EKH

EDER Trough Cutter ETH

EDER Carving Cutter ESF

EDER Wire Brush ERB

EDER Bark Beetle Miller EBF

It is aimed at forestry professionals as well as individuals with basic skills in wood processing.

The instructions contain important information to professionally assemble the attachments to a chainsaw, to put them into operation, to operate, to use, to maintain and to eliminate simple disturbances themselves.

Ensure

The statutory warranty period is given to the attachment. Defects that occur, which are demonstrably attributable to material or assembly errors, must be reported to the seller immediately. Proof of the purchase of the attachment must be provided by invoking invoice and

cash register upon the use of the warranty. The warranty is excluded in respect of the parts where the defects are caused by natural wear and tear, temperature, weather and defects due to defective connection, installation, operation, lubrication or violence. Furthermore, for damage caused by inappropriate misuse of the machine, for example, improper modification or self-responsible repair work by the owner or third parties, but also in the event of deliberate machine overload, no Warranty taken over. The manufacturer does not guarantee:

- Parts that are natural wear and tear
- Failure to comply with the manual and lack of or incorrect care
- For consequences of improper maintenance and maintenance measures
- Damage from improper handling and incorrect operation

Guarantee


The warranty period for only private use is 24 months, for commercial or professional use or use, or for rental 12 months from the date of delivery. The legal guarantee remains unaffected. Warranty performance claims must always be proven by the buyer by means of the original proof of purchase. This must be attached to the warranty application in copy. Buyer's address and type of machine must be clearly identifiable when used professionally or commercially. Any defects that occur within the warranty period due to material or manufacturing defects must be rectified by repair, provided that they have arisen despite proper operation and maintenance of the machine.

No guarantee and guarantee

When assembling the attachment to the chainsaw, some chainsaw models may require taking away material on the engine casing and the engine lid. In addition, the oil pump must be laid still. By using the chainsaw with the attachments, the chainsaw loses its warranty.

Eder Mechanical Engineering GmbH does not pay for any damage to the chainsaw used. The use of the chainsaw with the attachments is based on its own responsibility.

Presentation of warnings

	SIGNAL WORD
Nature and source of danger! to follow	


 SIGNAL WORD
➤ Security

- The **warning sign** (warning triangle) draws attention to the risk of life or injury.
- The **signal word indicates** the severity of the danger.
- The paragraph "**Nature and source of danger**" **identifies** the nature or source of the danger.
- The paragraph "**Consequences**" describes possible consequences if the warning is not adhered to.
- The "**security**" **paragraph indicates** how to avoid danger. It is essential to comply with these security measures!

The signal words have the following meaning:

Warning word	Importance
Risk!	Identifies a hazard that is certain to result in death or serious injury if you do not avoid the danger.
Warning!	Identifies a hazard that can lead to death or serious injury if you do not avoid the danger.
Caution!	Identifies a hazard that can lead to minor to moderate injuries if you do not avoid the danger
Attention!	Indicates possible property damage. The environment, property or the plant itself can be damaged if you do not avoid the danger.

Symbols in this guide

Icon	Importance
	If this information is not taken into account, this can lead to deterioration in the operation.
>	Instructions for action: Describes activities that need to be performed.

Safety

The attachments for chainsaws were manufactured in accordance with generally accepted rules of technology. Nevertheless, there is a risk of personal injury and property damage if you do not observe the following basic safety instructions and warnings against instructions for action in this guide.

- > Read this guide thoroughly and completely before working with the chainsaw attachment .
- > Keep the instructions in such a way that it is in a readable state.
- > Make sure the guide is accessible to all users at all times.
- > Always pass on the attachment device for chainsaws to third parties together with this guide.

Intenite use

The attachments are intended as accessories for installation on chainsaws. The various attachments can be replaced with each other. You may use the attachment for chainsaws exclusively for the activities described in this guide. At the same time, you must always comply with the performance limits of the device.

The attachments are approved for use in forestry and the private sector. It is designed exclusively for one person to operate. No two or more people are allowed to work on one device.

The intended use also includes that you have read and understood this guidance, and in particular the "Safety Instructions" chapter on page 4.

Unintended use

Any improper use is prohibited. Used as inappropriate if you

- Remove or modify security devices,
- Use the attachments differently than described in the "Determined Use" chapter on page 5,
- Assemble the attachments differently than described in the "Montage" chapter on page 13.
- Use the attachments under operating conditions that differ from those described in this guide.

If the device is not used as intended, all warranty claims will expire.

The manufacturer is not liable for damage to the device or for personal injury caused by improper use.

Staff qualification

The attachments for chainsaws may only be assembled, operated, maintained and repaired by people who have familiarized themselves with the device and the associated hazards based on this guide.

Persons who assemble, operate, dismantle or maintain the attachments must not be under the influence of alcohol, other drugs or medications that affect responsiveness, nor are they tired, sick or irritated.

People under the age of 18 are not allowed to operate the device. However, it is permissible to transfer such activities to persons over the age of 16, as far as this is necessary to achieve a training objective and the protection of the supervision of a skilled person is guaranteed.

You have to pay attention to that

General safety advice

- > Be sure to follow the instructions in this guide to avoid hazards and damage.
- > Comply with the relevant accident prevention rules and other generally accepted safety and occupational health rules.
- > Do repair, setup, maintenance and cleaning work, as well as transporting the device only when propulsion is switched off and tools are stationary.
- > Use the device exclusively with the protection equipment attached or provided by the manufacturer.
- > Never leave the device in operation unattended.
- > Wear a hairnet with long hair when working with the device.
- > Do not smoke while refueling or working with the device.

Safety advice on the workplace

- > Make sure that the workplace and the traffic routes required to transport and remove the wood are safe.
- > Keep the workspace free of wooden scraping, obstacles and stumbling points. Blunt slippery and smooth spots. Do not use sawdust or wood ash, otherwise there is a risk of slipping.
- > Ensure adequate lighting in the workplace.
- > Make sure that a level and step area with sufficient freedom of movement is available to work.
- > When using internal combustion engine chainsaws, work only in well-ventilated environments and not in enclosed spaces. The exhaust gases contain toxic carbon monoxide.

- > Avoid people approaching the running device. Keep people and animals out of the workplace. Children, animals and adults must stay at least 10 metres away from the running device.
- > Never work in the rain, as the stability is impaired in wet conditions.
- > Don't leave the device in the rain.

Behaviour in an emergency

For example, if there is a direct risk of injury to people due to malfunctions or dangerous situations, or if the device can be damaged:

- > Turn off the device to which the attachment is mounted.
- > Have the malfunctions removed by the specialist retailer.

Safety

The attachments may only be used with the protection and safety equipment intended for use (e.g. protective sheet). Protection and safety equipment must not be rendered ineffective and, if necessary, must be cleaned.

Personal protective equipment

- > Always wear the following personal protective equipment when you are on the service:
 - Safety shoes with steel cap
 - Close-fitting clothing, possibly a hairnet
 - Suitable work gloves
 - Protective helmet with facial protection
 - Hearing protectors
 - Cut protection pants



Personal protective equipment must comply with applicable accident prevention regulations.

Structure and function

Function

With the different versions of the attachment, you can reach different contours when processing the wood. You can replace the individual attachments with a different attachment with just a few steps.



EDER Peeler ESG

Structure: The ESG peeler uses a clutch bell matching the chosen chainsaw and a matching carrier. The clutch bell is mounted in place of the chain rite and the wearer instead of the chainsaw sword. The milling head is mounted on the wearer.

Application: For peeling tree trunks with any diameter.

The constructive training of the roller results in a high machining performance with minimal effort.

Hard metal pins arranged directly behind the knives are designed in such a way that the distance between the knives from the stem wood is automatically maintained and independently of the bark thickness over the entire stem length. Astan sets and thin branches are milled lightly and cleanly.

The roller is straight and mills a flat area similar to the peeler. This allows you to set the device diagonally or across the board when working on the trunk and peeling root approaches.



For the processing of Robinson wood, we recommend the use of the contour hollow EKH.



EDER Planhobel EPH

Structure: The plan coof EPH uses a clutch bell to match the chosen chainsaw and a matching carrier. The clutch bell is mounted in place of the chain rite and the wearer instead of the chainsaw sword. The milling head is mounted on the wearer.

Application: To plan hollow flat or arched wood surfaces from 30 cm in diameter.

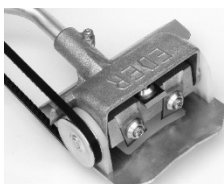
The constructive training of the roller results in a high machining performance with minimal effort.

The knives attached to the rotating roller can be adjusted continuously, allowing you to adjust both cut radius and the cut depth to the desired chip thickness.

On the reel there are four knives spread over two levels, which create a smooth surface without vibrations.

EDER Roundo ERH

Structure: The ERH round-loat uses a clutch bell to match the chosen chainsaw and a matching carrier. The clutch bell is mounted



in place of the chain rite and the wearer instead of the chainsaw sword. The milling head is mounted on the wearer.

Application: For hobbling round, flat or arched wood surfaces up to 30 cm in diameter.

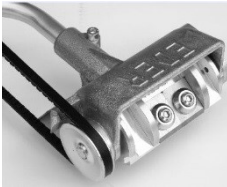
The constructive training of the roller results in a high machining performance with minimal effort.

The knives attached to the rotating roller can be adjusted continuously, allowing you to adjust both cut radius and the cut depth to the desired chip thickness.

On the reel there are four knives spread over two levels, which create a smooth surface without vibrations.

EDER contour hobble EKH

Structure: The contour coat EKH uses a clutch bell to match the chosen chainsaw and a matching carrier. The clutch bell is mounted in place of the chain rite and the wearer instead of the chainsaw sword. The milling head is mounted on the wearer.



Application: For hobbling straight and wavy wood surfaces, such as in the construction of log houses, children's playgrounds, bonanza fences and similar projects. Good for very hard woods like Robine wood.

The constructive training of the roller results in a high machining performance with minimal effort.

The adjustable minimal knife overweathering effectively prevents the wood from splintering. Since only one cut to working width occurs when the roller is rotated, the reaction forces are minimal. Astan sets and thin branches are easily and cleanly couth off.

EDER Troghöhler ETH

Structure: The Troghöhler ETH uses a clutch bell to match the chosen chainsaw, which is mounted in place of the chain rite. The troghöhler is mounted on a sword and is used instead of the chainsaw sword on the chainsaw .



Area of application: For milling depressions in wood surfaces, for making trough, for sculptural activities, for tree surgical measures and for removing stucco .

The constructive training of the milling heads results in a high machining performance with minimal effort.

By arranging the round knives, it is possible to process it in both longitudinal and cross-direction. There are 2 round knives on each of

the millhead, which create a smooth surface without vibration. Due to the minimal knife weathering, the split of the wood is effectively prevented.

EDER disc milling ESF

Structure: The ESF disc mills use a clutch bell to match the chosen chainsaw, which is mounted in place of the chain rite. The disc mist is mounted on a sword and is used instead of the chainsaw sword on the chainsaw .



Area of application: For milling gutters and depressions in wood surfaces, e.g. during the construction of log houses, children's playgrounds, carving of sculptures and similar projects.

The constructive training of the milling head results in a high machining performance with minimal effort.

There are 2 half-round knives on the milling head, which create a smooth surface without vibration. Due to the minimal knife weathering, the split of the wood is effectively prevented.



EDER round brush ERB

Structure: The round brush ERB uses a clutch bell to match the chosen chainsaw and a matching carrier. The clutch bell is mounted in place of the chain rite and the wearer instead of the chainsaw sword. The round brush is mounted on the carrier.

Area of application: For processing and cleaning wood surfaces, metallic surfaces such as steel or iron and for removing rust or old paint.

With the EDER round brush ERB, you can work out the natural structure of wood grain from boards or beams and round wood, for example during construction, restoration and maintenance work of log houses, children's playgrounds, park benches, wooden fences, weathered and Morning woods and similar projects.



EDER bark beetle miller EBF

Structure: The bark beetle miller EBF uses a clutch bell matching the chosen chainsaw and a matching carrier. The clutch bell is mounted in place of the chain rite and the wearer instead of the chainsaw sword. The milling head is mounted on the wearer.

Area of application: The device is suitable for spraying the tree bark around the bark beetle brood to block the feeding ducts. On the heated surfaces, resin bleeds and hardens on the surface. As a result, the maggots of the bark beetles are hindered in their development. Furthermore, the decay of the carved tree trunk is encouraged because it dries out less quickly than after dehydration. In addition, fungal spores and microbes find abundant attack surface in the cracks.

Delivery

Check the scope of delivery for completeness

The supplied by the chosen attachment includes:

- 1x attachment
- 1x clutch drum (chainsaws specific)
- 1x Carrier (chainsaws specific -not for ETH and ESF)
- 1x wedge straps
- 1x Inner six-key 6 mm
- 1x Settle apprenticeship (ESG, EPH, ERH, EKH, ESF)
- 1x User Manual
- 1x Nutmother key (EBF)/2x Nutmother key (ERB)

Check transport damage

Visible transport damage can be detected by packaging damage or scratched and deformed parts on the device.

- > Be sure to note the damage on the cargo letter: Both the copy you receive and the cargo letter you need to sign.
- > Be sure to let the bringer (driver) counter-draw.

Should the supplier refuse to confirm the transport damage, it is better if you refuse to accept it altogether and inform us immediately. A claim in retrospect, without a direct note on the cargo letter, is not recognised by either the carrier or the transport insurer.

If you suspect a covert transport damage:

- > Report concealed transport damage no later than two days, which means that you must have checked your delivered goods during this period. Notifications thereafter are generally not accepted.
- > In any case, note on the freight papers: "The goods are accepted subject to a covert transport damage."

Insurance companies of hauliers are often very suspicious and refuse replacement services. Therefore, try to prove the damage unambiguously (possibly photo).

Transport



CAUTION

Risk of injury to the head of the attachment!

The knife head of the attachment has sharp-edged tools that can cause injury.

- > Make sure there is a large enough distance between the knife head of the attachment and people.
- > Wear the motorized handheld device with the knife head of the attachment facing backwards and rotated away from the body with the exhaust.

ATTENTION

Danger from expiring fuel!

If the filling pluglet for the fuel is not properly sealed, fuel can leak and pollute the environment.

- > Before transporting, check whether the filling button for the fuel is properly sealed.
- > When transporting on vehicles, secure the device from overturning.

Assembly



WARNING

Danger with assembly work with running drive engine!

Injuries are possible.

- > Turn off the drive engine before assembly work and secure the device from turning back on.



WARNING

Danger from changes to the device!

Injuries are possible.

- > Only carry out the assembly work described in this guide.
- > Do not adjust the wearer, the wedge belt, the knives or the milling head when the engine is running. The wedge belt must always be well stretched.
- > Use original spare parts only. You can order these directly from Eder Mechanical Engineering GmbH or from the dealer (see contact back)

Preparations on the chainsaw

- > Remove the sawdust, the chain riddling, the sliding strips, the clawed stroke and, if necessary, the chain guide plates
- > Depending on the type of chainsaw , additional areas may have to be sanded freely on the chain wheel lid and on the engine casing (see.Figure 1And 2).
- > Replace the chain rioter of the chainsaw with the included clutch bell
- > Check the original needle bearing of the chainsaw and lubricate it somewhat with rolling stock.
- > The oil pump must no longer extract oil. If the oil pump runs dry, the oil pump can take damage to some models. Alternatively, take the oil production snail.

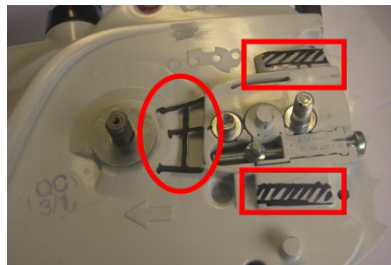


Figure 1: Possible areas to be freed at the engine casing

ATTENTION

By converting and using the chainsaw with the Eder attachments, the chainsaw loses its warranty. Eder Mechanical Engineering GmbH assumes no liability for damage to the chainsaw!



Figure 2: Possible areas to be cleared on the chain-wheel lid

Installation of the attachment

- > Place the carrier (1 – Figure 3) with the slot between the threaded pins (2 – Fig.
- > The hole (3 – Fig.3) in the carrier must be set in the customer by the chain spanner. This depends on the engine side chainsaw type or mounted in the lid (4 – Fig.3).
- > Hang the wedge strap between Clutch drum (5 – Fig .3) and Wedge pane (1 – Figure 4 2 e.1

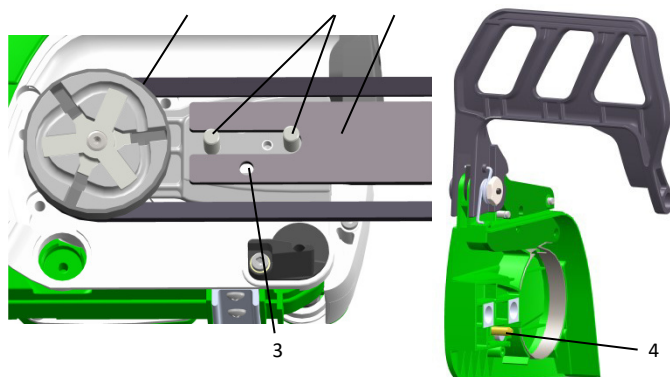


Figure 3: Mounting carriers and hanging wedge belts

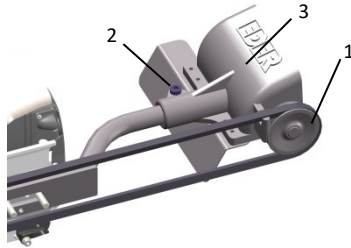


Figure 4: Attachment of the peeling head to the carrier

- > Make sure the strap is already a bit advanced. Otherwise, loosen the inner six-cab (2 – Fig.4) and slide the peeling head (3 – Figure 4) forward on the wearer until the belt is stretched forward. Tighten the inner six-cantor again.
- > Put the wedge belt lid back on so that the chain spanner's taker reaches into the carrier.
- > Spare the wedge belt by adding the wedge belt to the cuneilbelt (4 – figure.3) Turn clockwise
- > Check the wedge strap voltage by pressing on the wedge belt with a finger. The wedge belt is allowed to give a maximum of 1 cm.
- > If you are using a pre-voltage meter, then set a bias of 240 N.
- > Tighten the two nuts of the wedge strappy lid.

ATTENTION

Damage to the wedge belt!

- > Check that the wedge belt can move freely between the clutch bell and the pulley on the attachment and does not grind on other components.
- > Check that the clutch bell and pulley lie in an escape and the wedge belt is just in between.

Commissioning and operation

ATTENTION

Damage to the knives and tools!

Nails, adhesive sand and other foreign objects can damage the knives and tools of the attachment.

- > Before each use, check the strains to be processed. If necessary, remove nails, adhering sand and other foreign objects before milling.

Before you leave the motorized handheld device on, you need to produce safe working conditions. Check if

- > The attachment was mounted correctly,
- > The wedge belt is sufficiently stretched and not damaged,
- > The wedge strap brake is functional,
- > All knives and tools are correctly mounted and sit tight (suit moment 35 Nm),
- > The handles are clean and dry,
- > Both fuel containers and the device are located outside fire-prone environments. Note that closed, empty fuel containers can contain explosive fumes.

Start the engine



CAUTION

Risk of injury from retracting tool!

After you release the gas lever, the device will continue to rotate for a short time (freewheeling).

- > Before starting the engine, make sure that all protective casings and protective sheets are mounted on the attachment.

- > Place the motorized handheld device on the floor in such a way that the device does not touch any foreign objects.
- > Never start the device in a hanging position.
- > Keep the device away from the body while working.
- > Make sure no one is in the workspace of the device.

Operation



WARNING

Risk of injury due to unsafe status!

If you don't have a safe stand or work overhead, there is a risk of injury.

- > Always take a safe and firm position.
- > Never work on a versed or wet surface, otherwise there is a risk of slipping.
- > Don't work on ladders or in unstable positions.
- > While working, hold the device well with both hands so that no body parts can approach the wedge belt, tool head or exhaust. The right hand must be on the gas handle and the left hand must tightly cover the front grip. This also applies to left-handers.
- > Do not hold the device overhead when working and always use both hands when editing.
- > Work calmly and carefully in good visibility and sufficient lighting.

Injury!

If you do not comply with the following points, injuries are possible due to recoil of the device.

- > Use only wood with the device (exception round brush ERB).
- > Make sure that the knife head does not touch any foreign objects (stones, glass, metal objects, etc.) during processing, which cause damage to the knife head or the wedge belt.
- > Place the knife head or round brush on the parent surface only with operating speed when the engine is running.
- > Make sure that the gas lever is not blocked by gas locking when working with the device, as in this case no control of the rotation is possible.
- > Check the fixed seat of the knives before each use.
- > Turn off the device before you put it down.

Change and adjust knives

EDER Peeler ESG

Sharp knives are required for optimal work with the EDER peeling device ESG.

I Blunt knives can be reground by hand on normal grinding discs. the Cutting angle 40 °.

The required knife adjustment depends on the type of wood to be peeled.

Reinstop the knives on a case-by-case basis.

I The lower the knife overbalance, the less wood is removed and the smoother the surface becomes.

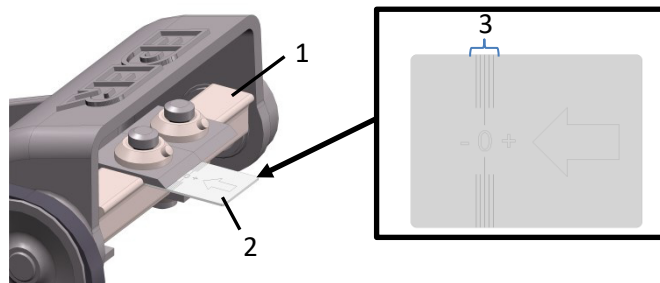


Figure 5: Set knives

The carbide pins on the knife disc serve as a depth limit. All four knives must therefore have the same setting and distance from the carbide pins. The knives must not protrude over the carbide pins.

All four knives are replaced and adjusted in the same way. With each knife, proceed as follows:

- > Loosen the inside six-cantor of the knife with an inside six-edge key 6 mm.
- > If necessary, replace the knife.
- > Slide the adjustment apprenticeship (2 – Fig. 5) under the knife to the peel roller(1 – of Fig.5)in arrow direction.
- > Slide the knife in front or back until the cutting edge touches the zero marker.

If the device cuts too deeply or even hacks:

- > Move the knife in negative direction.

If the cut depth is too low:

- > Move the knife in a positive direction.

Warning: The cutting edge of the knife must be in the marked range (3 – Fig.5).

- > Always align the carbide pen on the knife disc forward towards the knife edge.
- > Tighten the inside six-yard of the knife again.

Ssuit moment: 35 Nm

EDER Planhobel EPH / EDER Round Bull ERH

Sharp knives are required for optimal work with the EDER plan lifting set EPH-1 and the EDER round-hobelset ERH.



Blunt knives can be reground by hand on normal grinding discs. the Cutting angle 40 °.

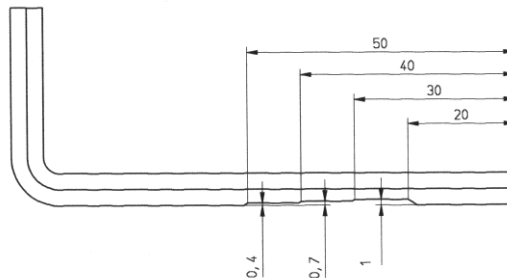


Figure 6: Inner six-key key with indentations

To adjust the knives you need the inner six-edge key 6 mm. This key has indentations for three settings of the knives: 0.4 mm, 0.7 mm and 1 mm.

The required knife adjustment depends on the type of wood to be peeled.

Reinstop the knives on a case-by-case basis.



The lower the knife transmits, the less wood becomes aThe surface becomes worn and all the smoother.

All knives are replaced and adjusted in the same way.

You can set the cut depth to 0.4mm, 0.7mm or 1mm with the included inner six-key bowl.

The knives are allowed to protrude a maximum of 1 mm above the guide plate.

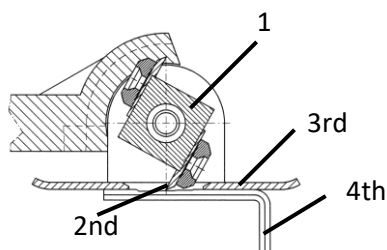


Figure 7: Set knives

With each knife, proceed as follows:

- > Loosen the inside six-cantor of the knife with an inside six-edge key 6 mm.
- > If necessary, replace the knife (2 – Figure .
- > Rotate the roller (1 – Fig.7) so that the knife protrudes maximum through the guide plate (3 – of Fig.7).
- > Place the inner six-edge key (4 – Fig.7) on the guide plate so that the indentation with the desired cut depth is under the knife.
- > Move the knife so that the knife edge at the point with the desired cut depth touches the inner six-edge key.
- > Tighten the inside six-cantor of the knife again.

Ssuit moment: 35 Nm

EDER contour hobble EKH

Sharp knives are required for optimal work with the EDER contour coat EKH.



Blunt knives can be reground by hand on normal grinding discs. the Cutting angle 40 °.

To adjust, you need the included inner six-key key and knife theory.

There are knives at the knife's theory, which allow you to adjust the knives to 0.2mm, 0.4mm and 0.6mm cut depth.

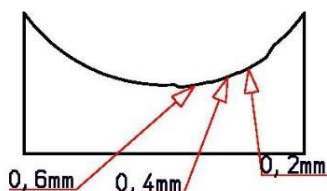
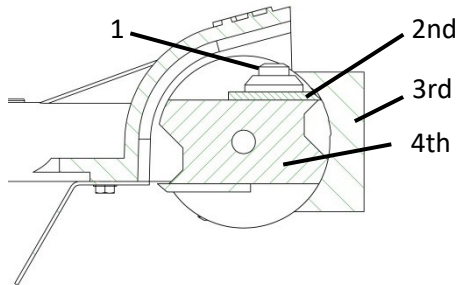


Figure. 8: Cut depths to knife theory

The lower the knife overbalance, the less wood is removed and the smoother the surface becomes.



Sit 9 Knecky

- > Loosen the knife screw (1 – Fig.9).
- > Slide the knife (2 – Fig.9) to the very back.
- > Place the knife's apprenticeship (3 – Fig. 9) on the roller (4 – Fig. 9) so that it lies on the two loading surfaces of the reel at the top and bottom.
- > Slide the knife to the knife's apprenticeship up to the desired setting height (0.2mm, 0.4mm, 0.6mm).
- > Tighten the knife screw again. Ssuit moment: 35 Nm

EDER Troghöhler ETH

Sharp knives are required for optimal work with the EDER Troghöhler ETH.

Blunt round knives can be rotated 180 ° around the knife screw and used again. You can regrind the round knives.



The rounding radius of the round knives must be preserved, otherwise the effectiveness of working is lost.

All 4 knives are replaced and adjusted in the same way. With each knife, proceed as follows:

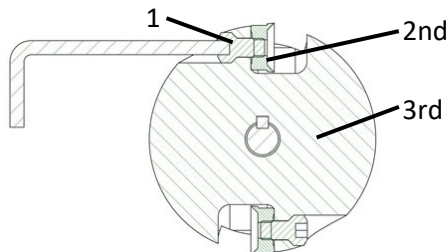


Figure 10: Changing knives

- > Loosen the knife screws (**1** – Fig.10)at the milling head (**3** – Fig.10)with an inner six-edge key 6 mm.
- > Swap the round knives (**2** – Fig.10)or rotate the round knives 180°.
- > Tighten the knife screw again. Ssuit moment: 35 Nm

Hire leadership buck at EDER Troghöhler ETH

The position of the guide buck determines the depth of the scooping out.

- > Clamp the top of the guide buck on the bottom between the protective plates.
- > Move the guide buck between the protective plates in longitudinal direction as needed:
 - For deep scooping out far forward.
 - For flat scooping out far back.
- > Make sure the leadership buck doesn't touch the rotating knives.

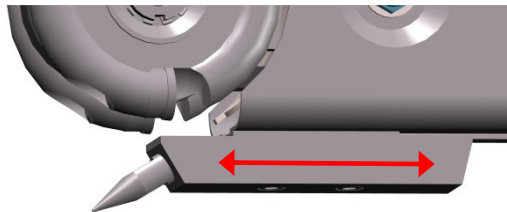


Figure 11: Hire Leadership Bock

ATTENTION

Damage to the knives!

A mismounted guide buck can damage the rotating knives.

- > Check the guide buck on a fixed seat before each use.
- > Make sure the guide buck can't touch the rotating knives.

EDER disc cutter ESF

Sharp knives are required for optimal work with the EDER disc cutter ESF.



Blunt knives can be reground by hand on normal grinding discs. the Cutting angle 40° . The rounding radius of the knives must be adhered to, otherwise there will be an uneven removal of the knives.

To adjust you need the included knife theory.

Both knives are set the same way.



The knives are allowed to protrude a maximum of 1 mm above the milling head, as the milling head serves as a depth limit.

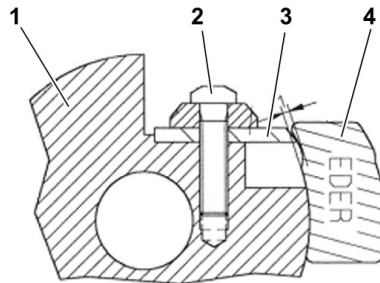


Figure 12: Knives change at the disc mills

- > Lightly loosen the knife screw (2 – Fig.12).
- > Apply the knife's apprenticeship (4 – Fig.12) to the milling head (1 – Fig.12) and slide the knife (3 – Fig.12) towards the knife's apprenticeship until it touches the notched area.
- > Fix the knife in this position by tightening the knife screw slightly again.
- > Tighten the knife screw again. Suit moment: 35 Nm

EDER round brush ERB

Change round brush

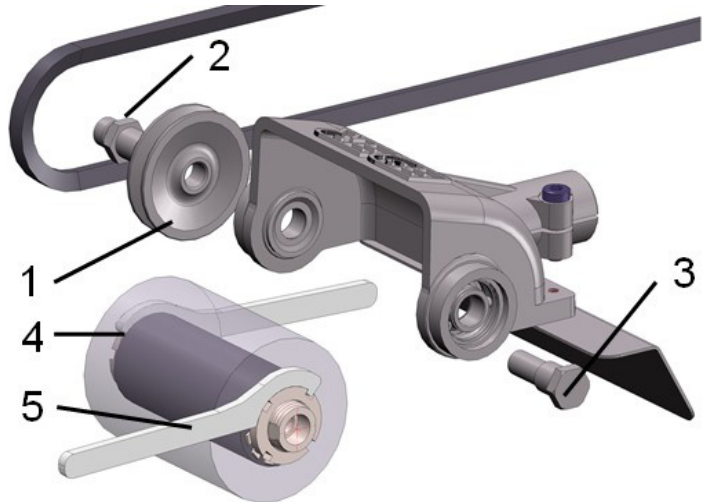


Figure 13: Change round brush

- > Hang out the wedge strap.
- > Screw off the wedge strap disc (**1** – of Fig.13). Take a lace pliers to help and place them in the side holes of the wedge strap disc.
- > Screw out the bearing wave briefly (**3** – Fig.13) and the bearing wavelong (**2** – Fig.13).
- > Remove the round brush from the case and loosen the fuse sheet (**4** – Fig.14).
- > Use the keys to loosen the Nutnuts countered against each other (**5** – Fig.14). The round brush can then be pushed off the shaft.
- > When reassembling, pay attention to a fixed seat of the nutnuts (35Nm) and bend a nose of the fuse sheet back into the groove of the nutmother.
- > Reinstall the two bearing waves short and long and tighten them. Suit moment: 35Nm
- > Turn the wedge strap disc back on
- > Hang the wedge belt again.

EDER bark beetle miller EBF

Sharp knives are required for optimal work with the EDER bark beetle miller EBF.



Blunt knives can be reground by hand on normal grinding discs.

Swap knives

- > Hang out the wedge strap.
- > Screw off the wedge strap disc (**1** – Fig14). Take a lace pliers to help and place them in the side holes of the wedge strap disc.
- > Screw out the bearing wave briefly (**3** – Fig14) and the bearing wavelong (**2** – Fig. 14).
- > Remove the shaft from the case and loosen the fuse sheet (**4** – Fig.14).
- > Use the key to loosen the Nutmutter (**5** – Fig.14). The knives can then be pushed off the shaft.
- > When reassembling, pay attention to a fixed seat of the nutnuts (35Nm) and bend a nose of the fuse sheet back into the groove of the nutmother.
- > Reinstall the two bearing waves short and long and tighten them. Suit moment: 35 Nm
- > Turn the wedge strap disc back on
- > Hang the wedge belt again.

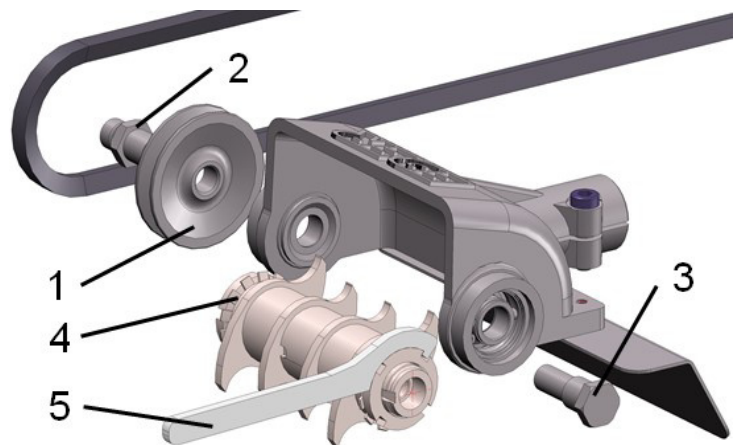


Figure 14: Changing knives

Cleaning

WARNING

Risk of maintenance, maintenance and cleaning work with running drive engine!

Injuries are possible.

Turn off the drive engine before maintenance, maintenance and cleaning work and secure the device from turning back on.

To be able to work safely, you need to clean the device after each use.

- > Remove all wood residues, chips and other dirt.
- > For the outer surfaces, use a dry or slightly moist rag and, if necessary, a commercially available detergent.
- > Do not use fat-dissolving, corrosive or aggressive detergents.

If the wedge belt is dirty:

- > Clean the wedge belt exclusively with a dry cloth.

Maintenance

WARNING

Risk of maintenance, maintenance and cleaning work with running drive engine!

Injuries are possible.

Turn off the drive engine before maintenance, maintenance and cleaning work and secure the device from turning back on.

Danger from changes to the device!

Injuries are possible.

- > Only carry out the maintenance and repair work described in this guide.
- > Do not make any changes to the device.
- > For work that goes beyond the work described in this guide, contact Eder Mechanical Engineering GmbH or authorized workshops.

WARNING

- > Do not adjust the wearer, the wedge belt, the knives or the milling head when the engine is running. The wedge belt must always be well stretched.
- > Use original spare parts only. You can order them directly from Eder Mechanical Engineering GmbH or from the retailer (see contact back).



The EDER attachments are powered by a wedge belt and therefore must not be lubricated.

Decommissioning and disposal

If the attachment is no longer operational and is to be scrapped, you must disable and dismantle it, i.e. You need to get the device to a state where it can no longer be used for the purposes for which it was designed.

Disorders

If you can't repair the device yourself, contact your retailer or an authorized repair shop.

The table below lists possible errors, causes, and elimination.

All hiring, cleaning, maintenance and repair work requires you to comply with safety regulations.

Disorder	Cause	Eliminating
Wedge straps slip through	Wedge straps too loose	Relate wedge belts
	Wedge straps have been lubricated or contaminated	Clean wedge belts and keep fat and oil-free
Wedge straps twisted/jumps off	Wedge straps too loose	Relate wedge belts

Disorder	Cause	Eliminating
	Device head twisted	Readjust the head on the carrier and tighten the inner six-cab. (See "Montage" on page < ÜS >)
Wrong cut deep/bad surface	Knife misadjusted	Reinstate knives
	Knife blunt	Recreate knife
	Air filters clogged	Aerial filters acid/replace

Technical data

Technical data	Es g	Ep h	Eca	EKH	Erb	Esf	Eth	Ebf
Weight [kg]	2.2	2.4	2.8	2.7	2.8	1.8	2.3	2.7
Number of knives	4th	4th	6	4th	–	2nd	4th	4th
Working width [mm]	120	120	120	120	100t h	30	54	90
Belt	XPZ987							
Max's speed	13,000 revolutions/min							

Accessories and spare parts

Inappropriate accessories, consumables and spare parts can affect function and safety and have the following consequences:

- Endangering people
 - Damage to the motorized handheld device
 - Malfunctions of the motorized handheld device
 - Disfailure of the motorized handheld device
- > Use only accessories, consumables and original spare parts.
- > Use only technically flawless accessories and original spare parts.

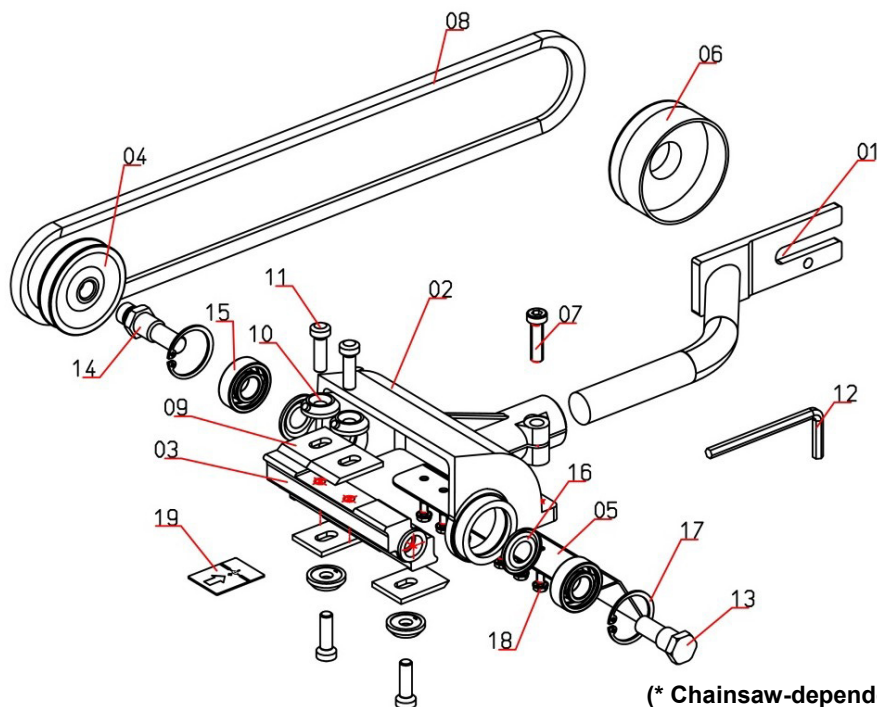
Strip knife to dampen the bark beetle

For the Eder peeling device ESG, we offer **the Bavarian Forest Stripe Knife National Park** for cracking tree trunks, which destroys the habitat of the bark beetle. The knives can be replaced quickly. For more information, visit: www.eder-maschinbau.de



Strip Knife National Park Bavarian Forest
Article #029504 (includes 4 knives)

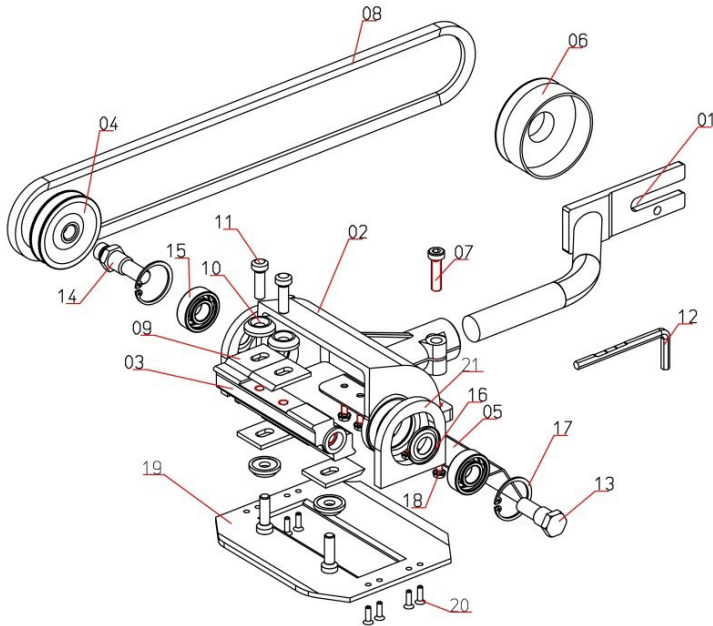
EDER Peeler ESG



(* Chainsaw-dependent)

Item.	Order	Label	Item.	Order	Label
01	0201xx *	Housing carriers	11	021100	Knife screw (4 x)
02	020200	Housing	12	021200	Inside six-key key
03	020301	Roller	13	021300	Lagoon Bolts Short
04	020400	Wedge pane	14	021400	Lagoon bolts long
05	020500	Mudguard	15	021500	Rill ball bearing (2 x)
06	0206xx *	Clutch drum	16	021600	Dense ring/Nilosring (2 x)
07	020700	Tension screw	17	021700	Backup ring (2 x)
08	020800	Belt	18	021800	Protective plate attachment screw
09	020900	Knives (4 x)	19	021900	Adjustment apprenticeship
10	021000	Knife (4 x)			

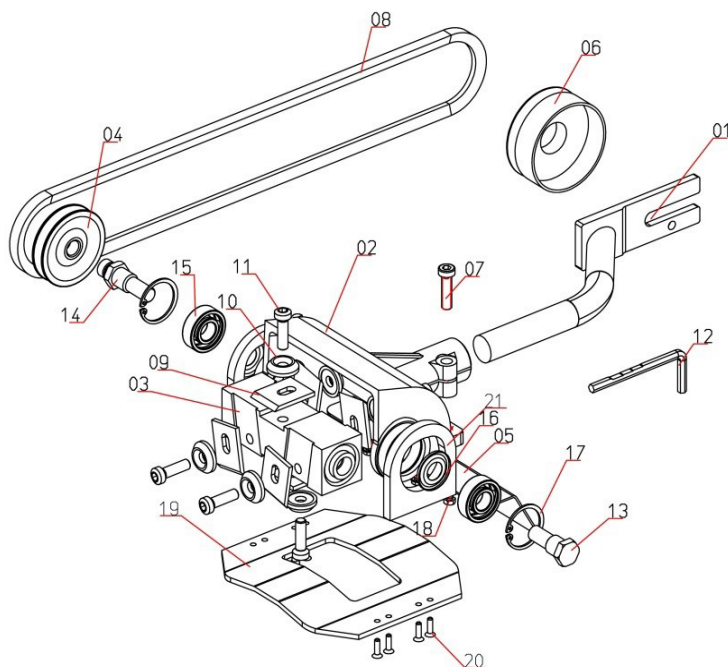
EDER Planhobel EPH



(* Chainsaw-dependent)

Item.	Order	Label	Item.	Order	Label
01	0201xx *	Housing carriers	12	062000	Inside six-key key
02	020200	Housing	13	021300	Lagoon Bolts Short
03	020302	Roller	14	021400	Lagoon bolts long
04	020400	Wedge pane	15	021500	Rill ball bearing (2 x)
05	020500	Mudguard	16	021600	Dense ring/Nilosring (2 x)
06	0206xx *	Clutch drum	17	021700	Backup ring (2 x)
07	020700	Tension screw	18	021800	Protective plate attachment
08	020800	Belt	19	061900	Leadership sheet
09	020900	Knives (4 x)	20	060600	Attachment screw (8 x)
10	061400	Knife (4x)	21	060700	Guide plate suspension (2 x)
11	021100	Knife screw (4x)			

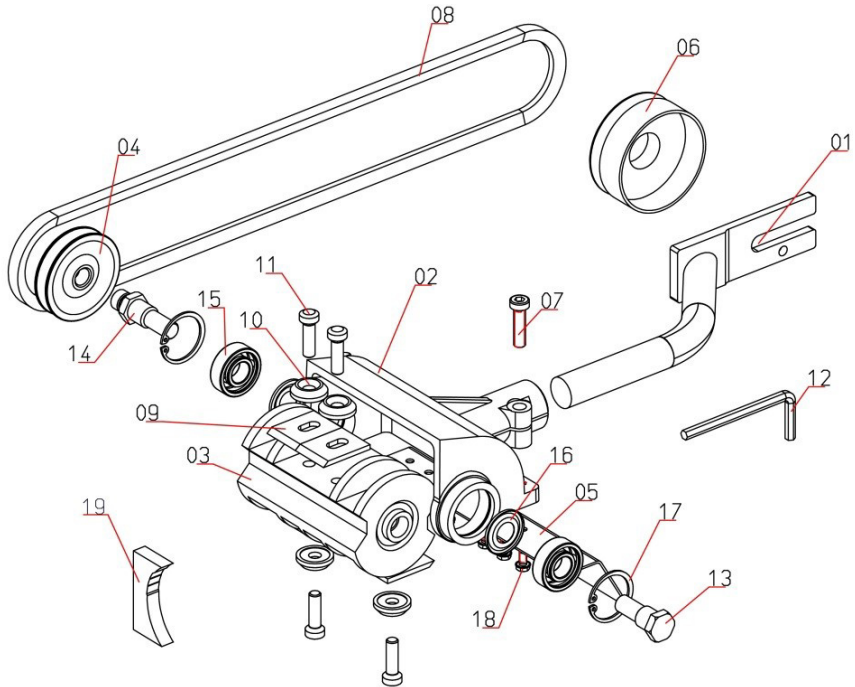
EDER Roundo ERH



(* Chainsaw-dependent)

Item.	Order	Label	Item.	Order	Label
01	0201xx *	Housing carriers	12	062000	Inside six-key key
02	020200	Housing	13	021300	Lagoon Bolts Short
03	071600	Roller	14	021400	Lagoon bolts long
04	020400	Wedge pane	15	021500	Rill ball bearing (2 x)
05	020500	Mudguard	16	021600	Dense ring/Nilosring (2 x)
06	0206xx *	Clutch drum	17	021700	Backup ring (2 x)
07	020700	Tension screw	18	021800	Scprotective sheet
08	020800	Wedge-belts SPZ 987	19	071900	Leadership sheet
09	020900	Knives (6 x)	20	060600	Attachment screw (8 x)
10	061400	Knife (6x)	21	070700	Leadership plate
11	021100	Knife screw (6x)			

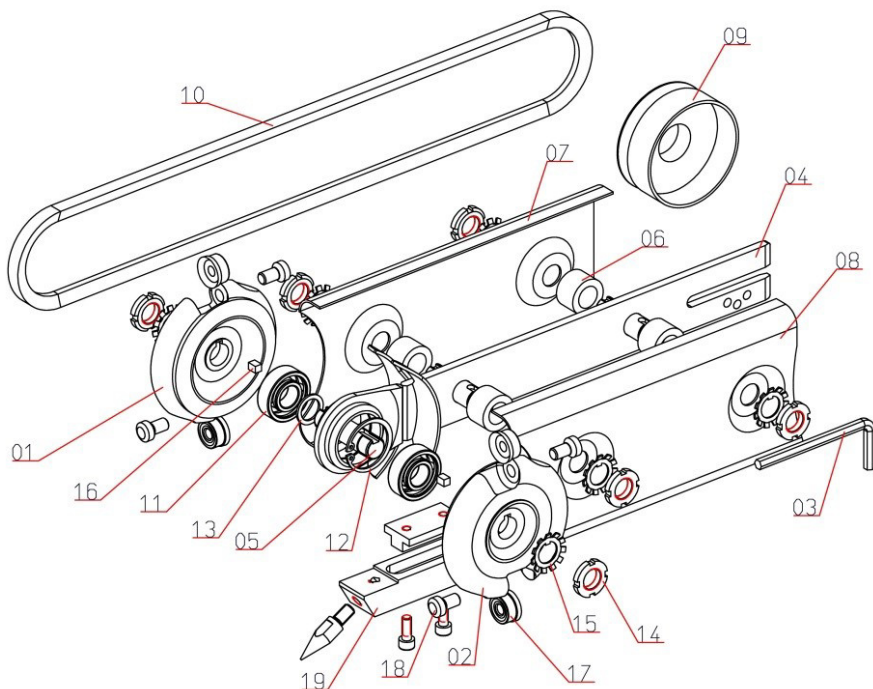
EDER contour hobble EKH



(* Chainsaw abH65)

Item.	Order	Label	Item.	Order	Label
01	0201xx *	Housing carriers	11	021100	Knife screw M8x25 (4 x)
02	020200	Housing	12	021200	Inside six-key key
03	190300	Roller	13	021300	Lagoon Bolts Short
04	020400	Wedge pane	14	021400	Lagoon bolts long
05	020500	Mudguard	15	021500	Rill ball bearing (2 x)
06	0206xx *	Clutch drum	16	021600	Dense ring/Nilosring (2 x)
07	020700	Tension screw	17	021700	Backup ring (2 x)
08	020800	Belt	18	021800	Protective plate attachment
09	020900	Knives (4 x)	19	191900	Knife apprenticeship
10	061400	Knife (4x)			

EDER Troghöhler ETH

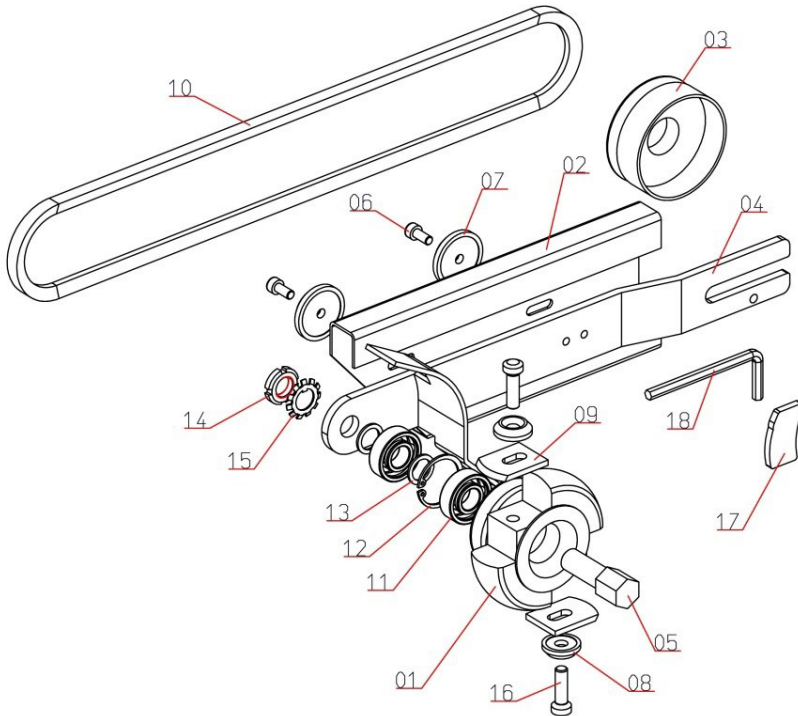


(* Chainsaw-dependent)

Item.	Order	Label	Item.	Order	Label
01	140100	Milling head on the right	11	021500	Rill ball bearing (2 x)
02	140200	Milling head left	12	021700	Backup ring
03	021200	Inside six-key key	13	031300	Support disc
04	0304xx *	Sword	14	031400	Wave Mother (6 x)
05	030500	Storage wave (3 x)	15	031500	Backup plate (6 x)
06	030600	Distance sockets (4 x)	16	031600	Pass spring (2 x)
07	030700	Protective plate on the	17	031700	Round knife (4 x)
08	030800	Protective plate left	18	031800	Knife screw (4 x)
09	0206xx *	Clutch drum	19	141900	Leadership buck with

Item.	Order	Label	Item.	Order	Label
10	020800	Belt			

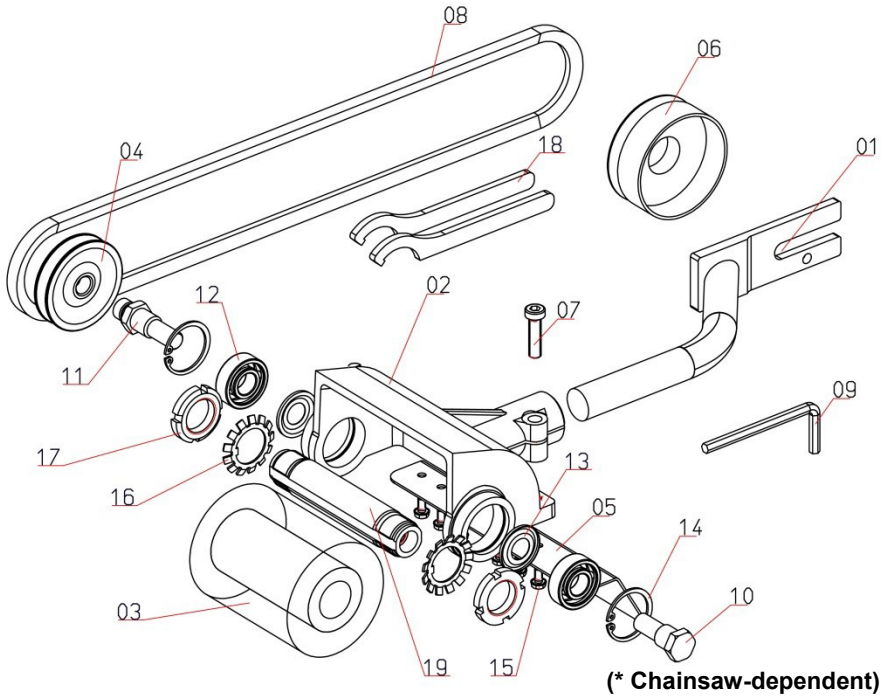
EDER disc milling ESF



(* Chainsaw-dependent)

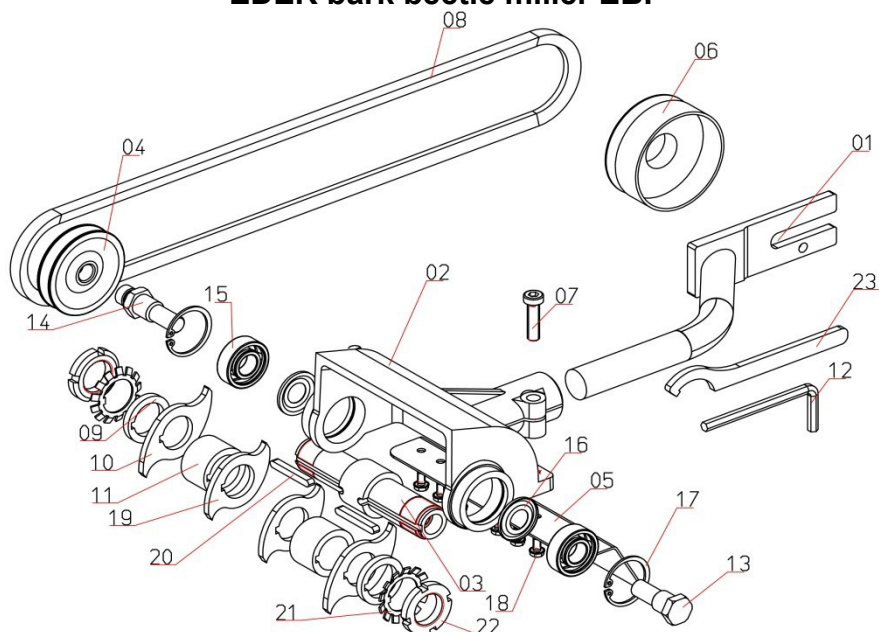
Item	Order	Label	Item	Order	Label
01	130100	Milling head with wedge strap	10	020800	Belt
02	130200	Mudguard	11	021500	Rill ball bearing (2 x)
03	0206xx *	Clutch drum	12	021700	Backup ring (2 x)
04	1304xx *	Sword	13	031300	Support disc (2 x)
05	130500	Warehouse Wave	14	031400	Wave Mother
06	130600	Protective plate attachment	15	031500	Backup sheet
07	130700	Disc (2 x)	16	021100	Knife screw (2 x)
08	061400	Knife (2 x)	17	131700	Knife apprenticeship
09	130900	Knives (2 x)	18	021200	Inside six-key key

EDER round brushes ERB



Item.	Order	Label	Item.	Order	Label
01	0201xx *	Housing carriers	11	021400	Lagoon bolts long
02	020200	Housing	12	021500	Rill ball bearing (2 x)
03	150500	Round brush	13	021600	Dense ring/Nilosring (2 x)
04	020400	Wedge pane	14	021700	Backup ring (2 x)
05	020500	Mudguard	15	021800	Protective plate attachment
06	0206xx *	Clutch drum	16	150400	Backup plate (2 x)
07	020700	Tension screw	17	150800	Wave Mother (2 x)
08	020800	Belt	18	150700	Nutmother key (2 x)
09	021200	Inside six-key key	19	150600	Wave
10	021300	Lagoon Bolts Short			

EDER bark beetle miller EBF



(* Chainsaw-dependent)

Ite	Order	Label	Item.	Order	Label
01	0201xx *	Housing carriers	13	021300	Lagoon Bolts Short
02	020200	Housing	14	021400	Lagoon bolts long
03	091600	Roller	15	021500	Rill ball bearing (2 x)
04	020400	Wedge pane	16	021600	Dense ring/Nilosring (2 x)
05	020500	Mudguard	17	021700	Backup ring (2 x)
06	0206xx *	Clutch drum	18	021800	Protective plate attachment screw
07	020700	Tension screw	19	091500	Knives inside (2 x)
08	020800	Belt	20	092000	Pass spring (2 x)
09	091400	Distance disc (2 x)	21	301200	Backup plate (2 x)
10	091900	Knife outside (2 x)	22	301300	Wave Mother (2 x)
11	090600	Distance piece (2 x)	23	092100	Nutmother key

Ite	Order	Label	Item.	Order	Label
12	021200	Inside six-key key			

Declaration

The manufacturer: Eder Mechanical Engineering Inc.
Schweigerstraße 6
38302 wolf buffalo
Germany

Explains that the following machine meets the relevant, basic safety and health requirements of the EC Machinery Directive 2006/42/EG due to its design and design.

Main name: EDER Peeler ESG Series-No: ESG-001000
Alternative accessories: EDER Planhobel EPH series-No: EPH-001000
EDER Round-Cloat ERH Series-Nr: ERH-001000
EDER Contour Cowel EKH Series No: EKH-001000
EDER round brush ERB series-No: ERB-001000
EDER Troghöhler ETH Series No: ETH-001000
EDER Disc PO ESF Series No: ESF-001000
EDER bark beetle miller EBF series-No: EBF-001000
And the following

The following standards were used to implement the safety and health requirements set out in the EC directives:

1. EN ISO 12100, Safety of Machines-General design guidelines, risk assessment and risk reduction
2. Fleeing force testing according to EN 847-1, machine tools for woodworking g-safety requirements-Part 1: Milling and hobby tools, circular blades

Internal measures ensure that series equipment always meets the requirements of the current EC directives and the standards applied.

Enforced person for the technical documents: Michael Pögel

Wolfenbüttel, the 10.08.2018



Ulrich Schrader, Managing Director

Eder Maschinenbau GmbH
Schweigerstraße 6
38302 Wolfenbüttel
Germany
www.eder-maschinenbau.de
info@eder-maschinenbau.de